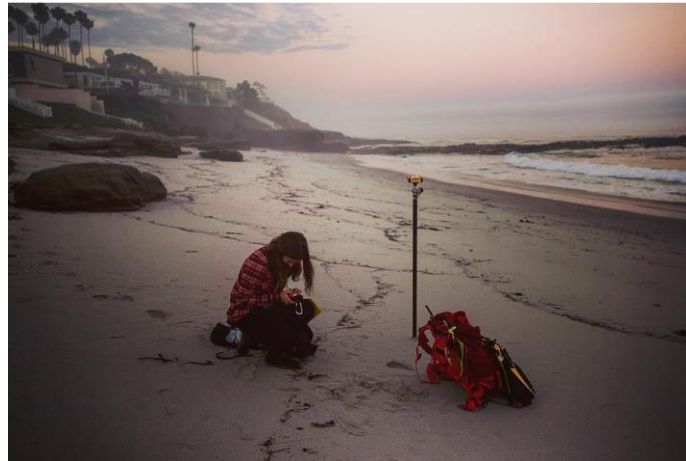
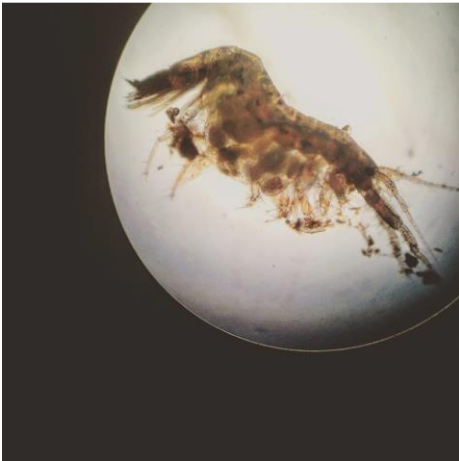


# Spatial characterization of meiofaunal diversity along the California coast and potential abiotic drivers



---

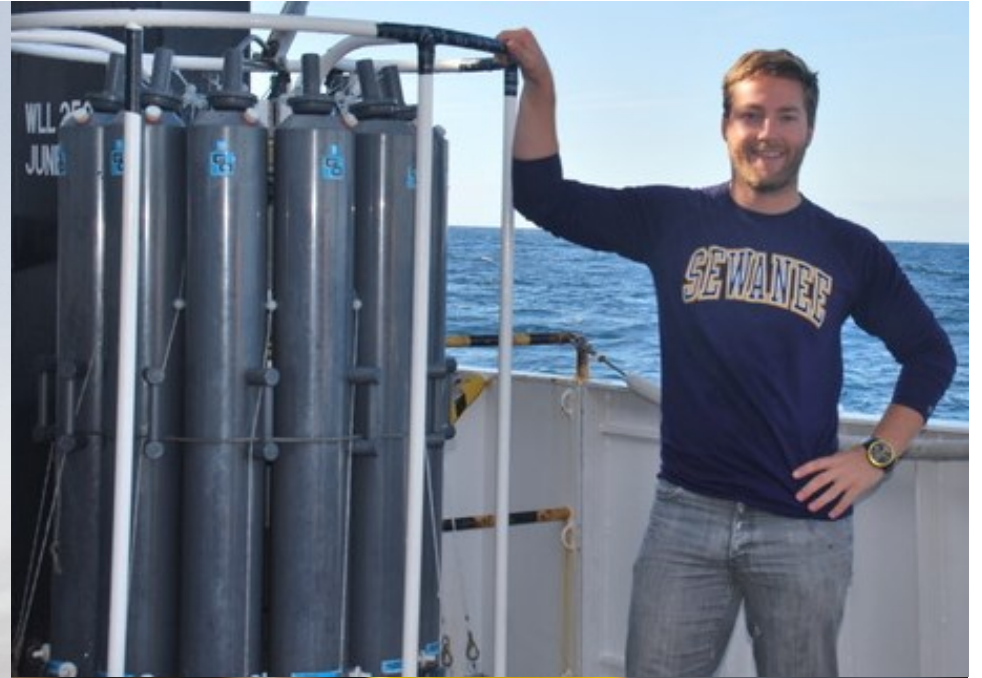
Thesis Defense by Amanda Heidt  
Wednesday, June 5<sup>th</sup> at 4PM  
MLML Seminar Room

# Morphological variability within *Dictyoneurum californicum* and *Dictyoneurum reticulatum* along a wave exposure gradient on the Monterey Peninsula



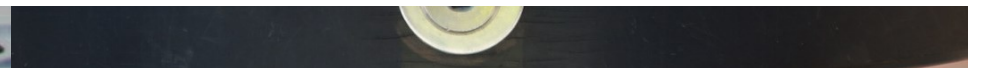
A Thesis Defense by Elizabeth Ramsay  
August 9<sup>th</sup>, 2019 at 10am, MLML seminar room

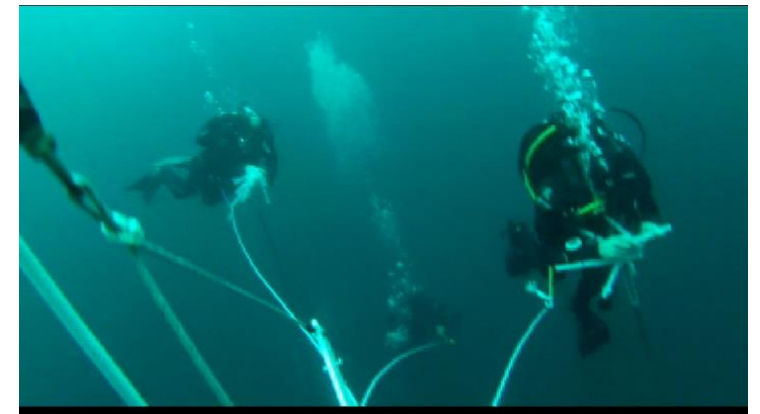




**THE INTERNAL WAVE DYNAMICS OF BARKLEY SUBMARINE CANYON • DREW BURRIER**

**Monday, August 13 • 4:00 PM • Moss Landing Marine Labs**





Mercury  
80  
**HG**  
200.59

# THESIS DEFENSE

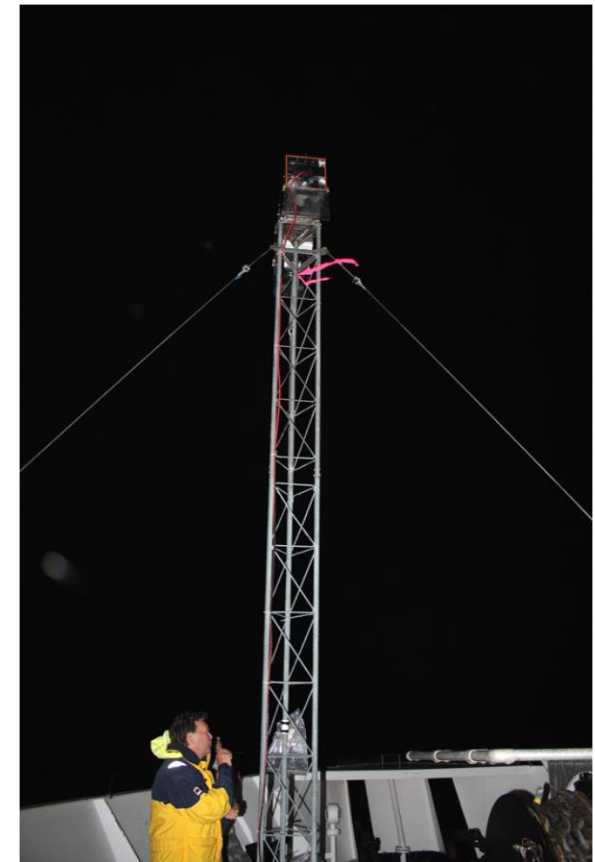
Alex Olson

Chemical Oceanography

December 3, 2018 10AM

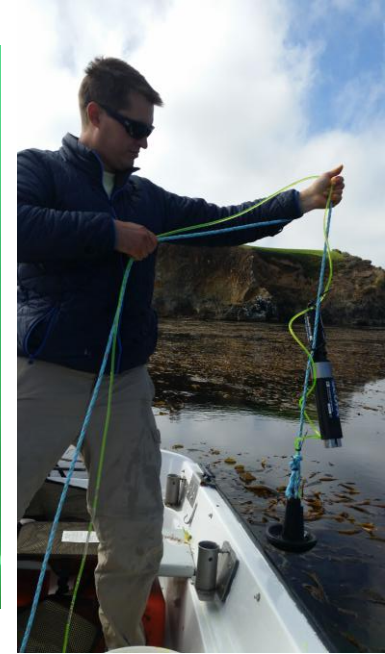
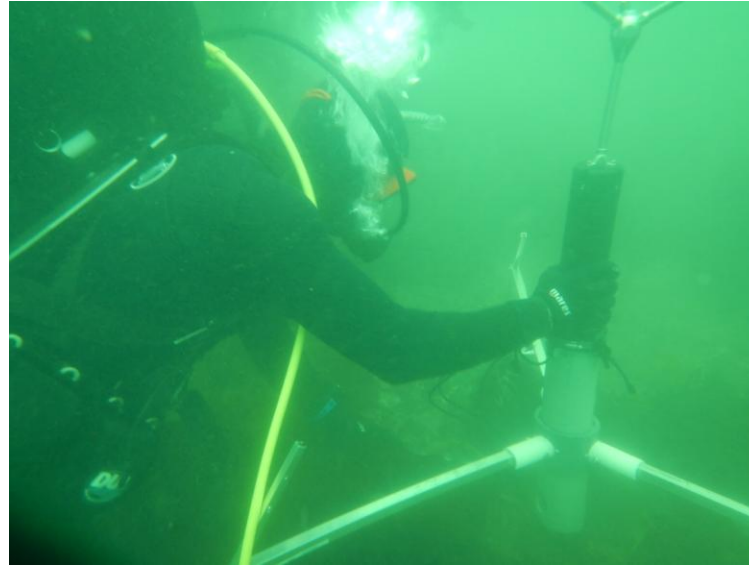
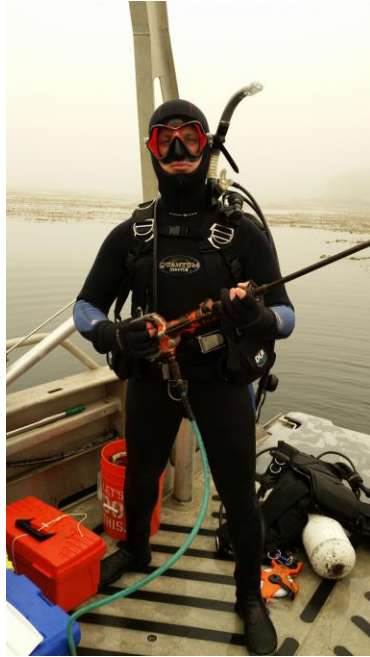
**THE BIOGEOCHEMICAL BEHAVIOR AND  
SPECIATION OF MERCURY IN THE SEA SURFACE  
MICROLAYER:**

**IMPLICATIONS FOR TRANSPORT TO WATERSHEDS  
VIA FOG**





Friday, November 22<sup>nd</sup> at 4:00 pm in the Seminar Room



**Biological and Physical Consequences of Giant Kelp, *M. pyrifera*, removals within a central CA kelp forest**

**Presented by Steven R. Cunningham**



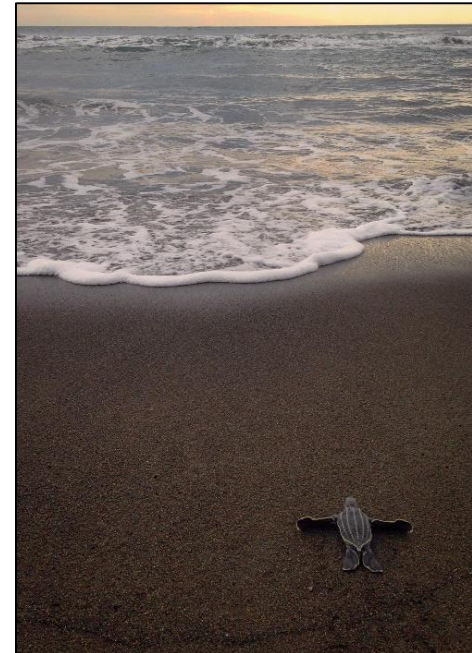


# Using stable isotopes to determine foraging area of leatherback turtles:

limitations of the isotope tracking technique in the western Atlantic Ocean

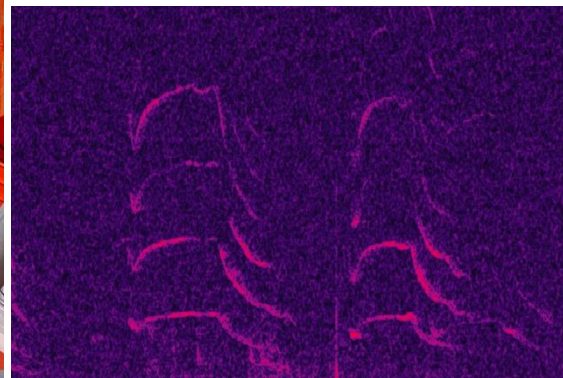


SAN JOSÉ STATE  
UNIVERSITY

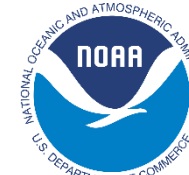


A thesis defense by Sharon Hsu  
Friday, December 13, 2019 at 12pm  
MLML Seminar Room

# Determining ecotype presence and the call repertoire of killer whales (*Orcinus orca*) from passive acoustic monitoring near Point Hope, Alaska in the Southeastern Chukchi Sea

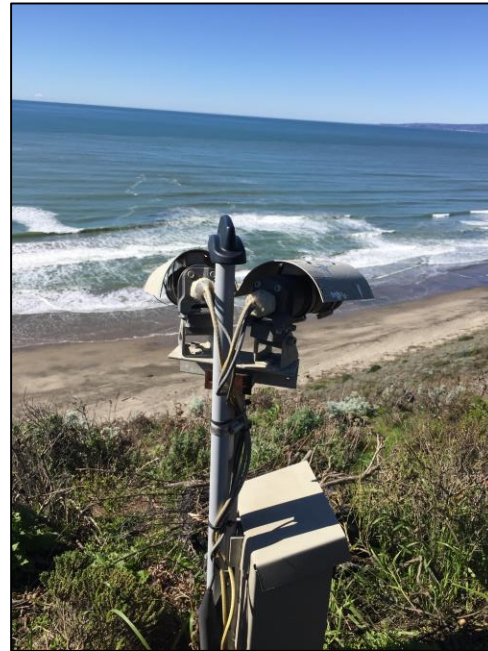


Thesis Defense by Brijonnay Madrigal  
Friday, December 13, 2019 at 4pm  
Moss Landing Marine Laboratories Seminar Room



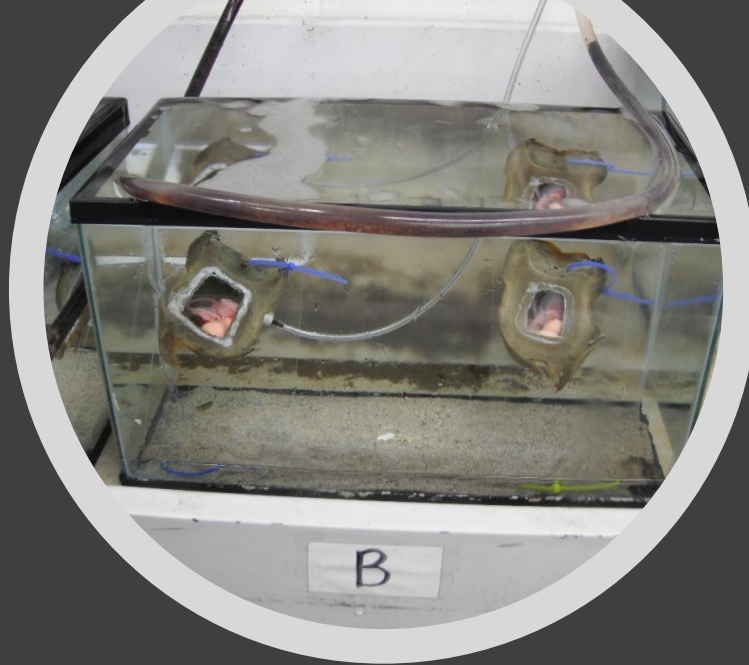


# Drivers of Sub-Seasonal to Interannual Shoreline Change at Sunset State Beach in Monterey Bay, CA



A thesis defense by Miya Pavlock McAuliffe  
Monday, January 27<sup>th</sup> at 4pm  
MLML Seminar Room





Thesis defense by Jessica Jang  
Pacific Shark Research Center  
March 29<sup>th</sup>, 12 pm

Reproductive strategies of the  
Big Skate (*Beringraja  
binoculata*, Girard 1855) with  
evidence of multiple paternity

# Quantifying the Emanation and Decay of Environmental DNA from Three Marine Molluscs



A thesis defense by Emily Pierce  
Friday, April 17<sup>th</sup> at 4pm  
Hosted online through Zoom

