

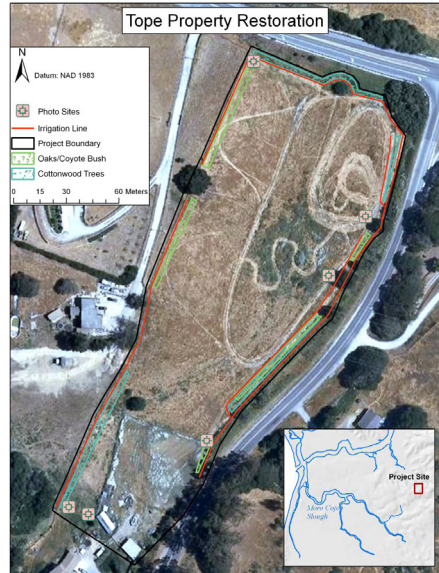
Tope Family Property Moro Cojo Restoration Project

Partners Involved: Coastal Conservation and Research, Tope Family

Restoration Performed

Previous restoration of waterways in rural residential areas that drain into the Moro Cojo Slough has lead to a landowner on one of the upper fingers of the slough collaborating with us to restore a pasture area on his property. Funds from this grant will be used to take the initial step of restoring the upland habitat.

Irrigation was installed around the perimeter of the pasture, where planting has occurred, to ensure survival for the first three years, after which watering is no longer needed. Native species include coyote brush, oaks, and cottonwoods. The woodland benefits the system by providing habitat for native birds and mammals, and acts as a barrier along the horse pasture. The long term goal is to establish a depressional wetland which will catch runoff from upstream and clean it prior to getting into the main stem of the slough.



Aerial of Tope parcel restoration plan

Plants

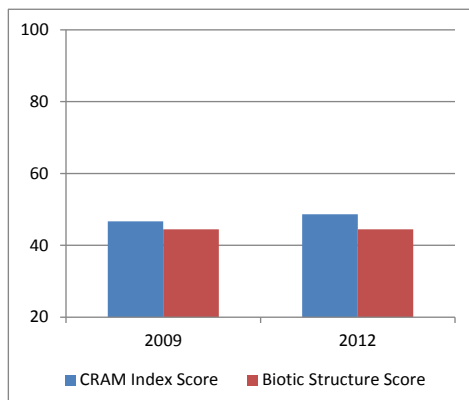
Number of Individuals Planted:

2009-2010: 153

Species Planted:

Coyote Bush	<i>Baccharis pilularis</i>
Cottonwood	<i>Populus balsamifera</i>
Coast Live Oak	<i>Quercus agrifolia</i>

Restoration Success



CRAM Scores

The California Rapid Assessment Method (CRAM) was used to assess the condition of health at Tope during 2009 and 2012. In 2009 The CRAM Index Score was 47 and in 2012 it increased to 49. The Biotic Structure score, an attribute of CRAM was 44 in both 2009 and 2012.

