

Regional Planning Documents Including the Moro Cojo

Oh, the years we have spent planning...

Northern Salinas Valley Watershed Restoration Plan

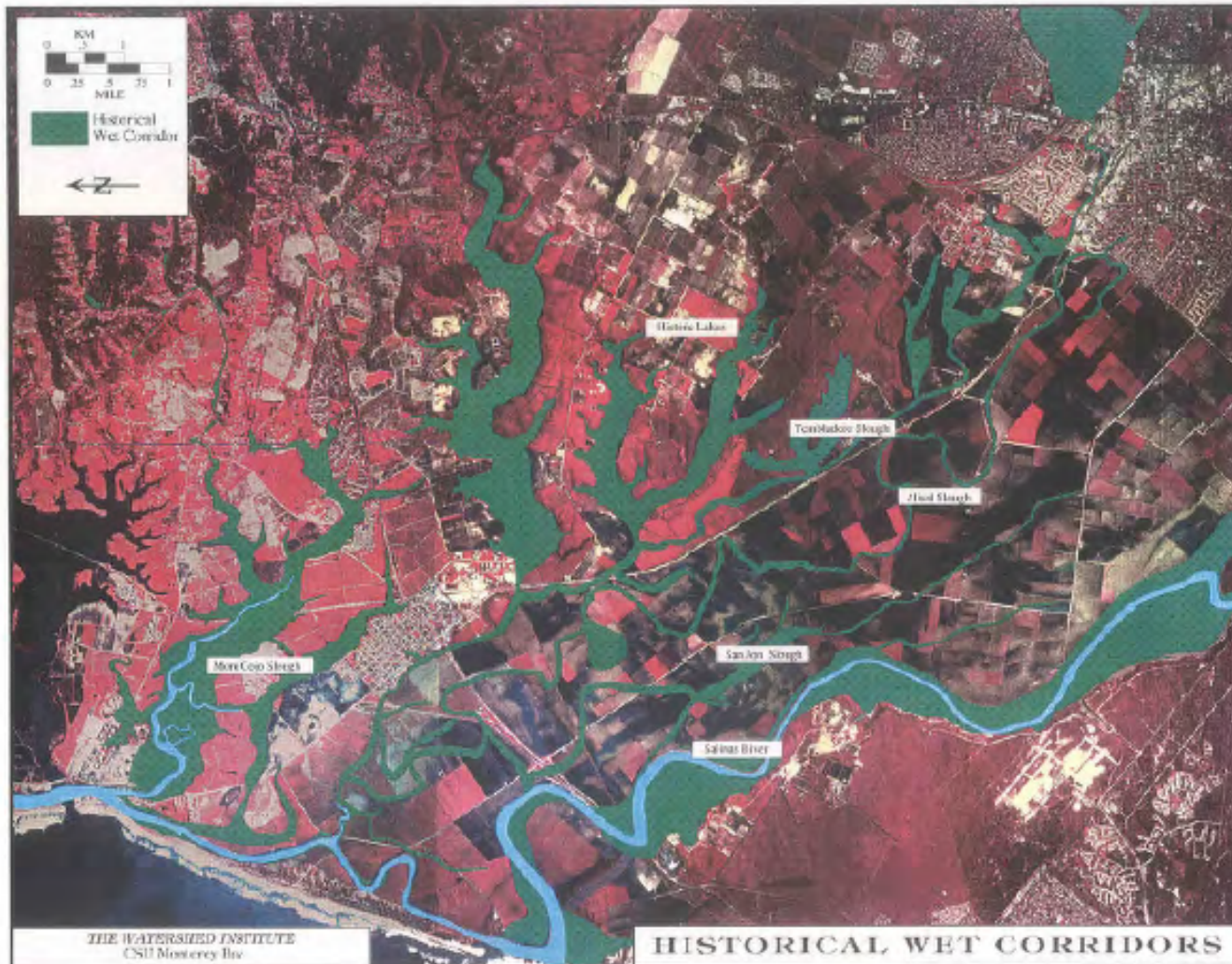


Figure 3. Historical environmental conditions in the lower Salinas Valley, near 1850.

Northern Salinas Valley Watershed Restoration Plan

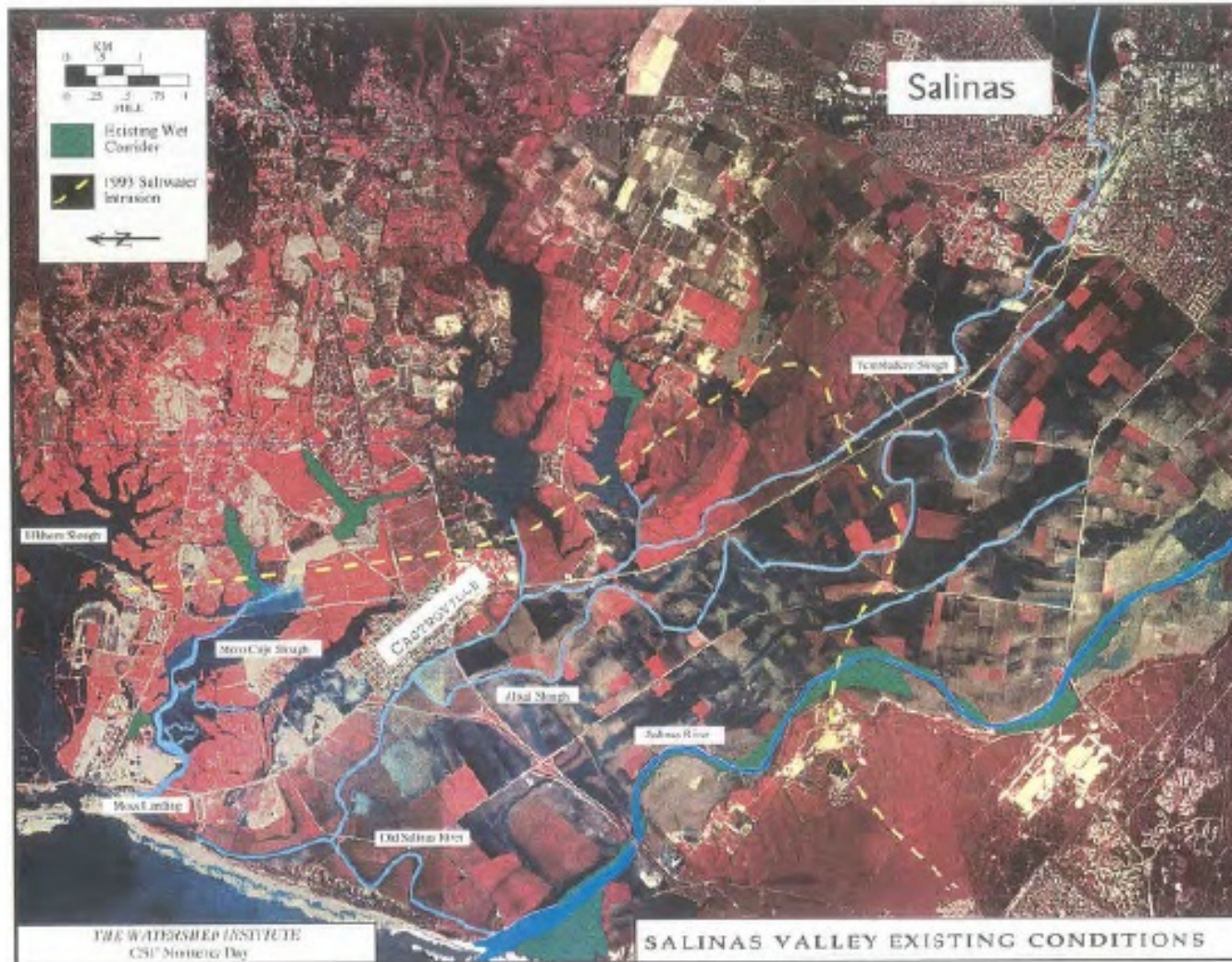
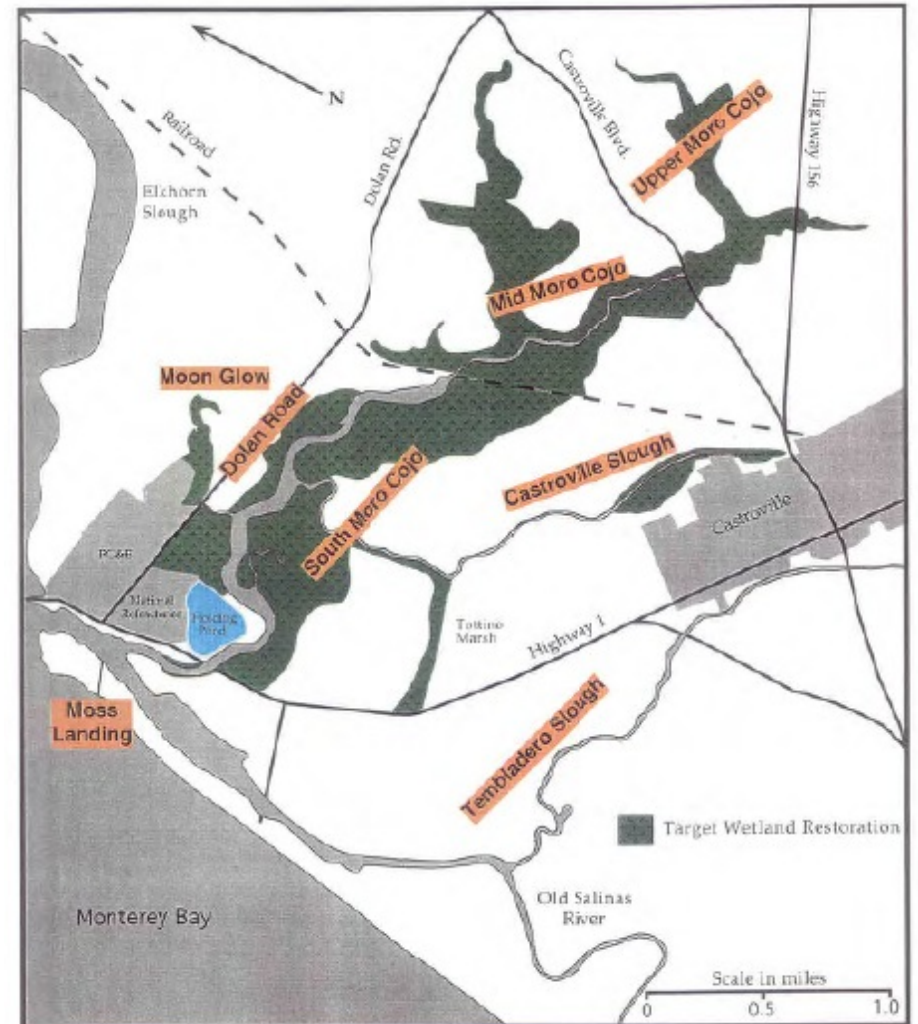
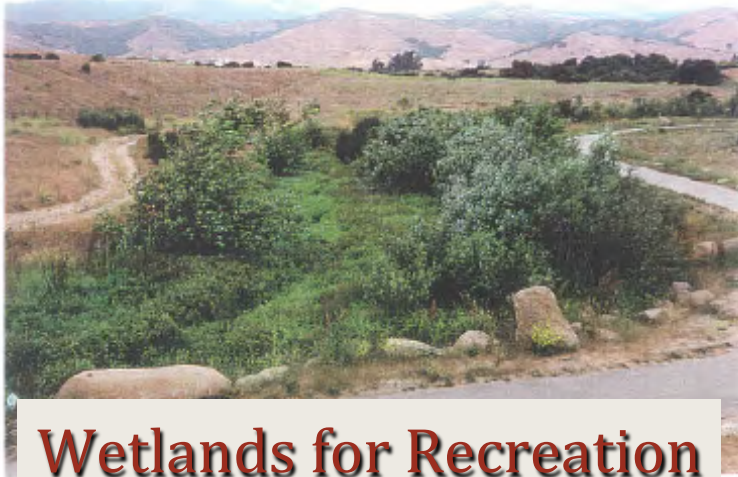


Figure 1. Existing environmental conditions in the lower Salinas Valley.

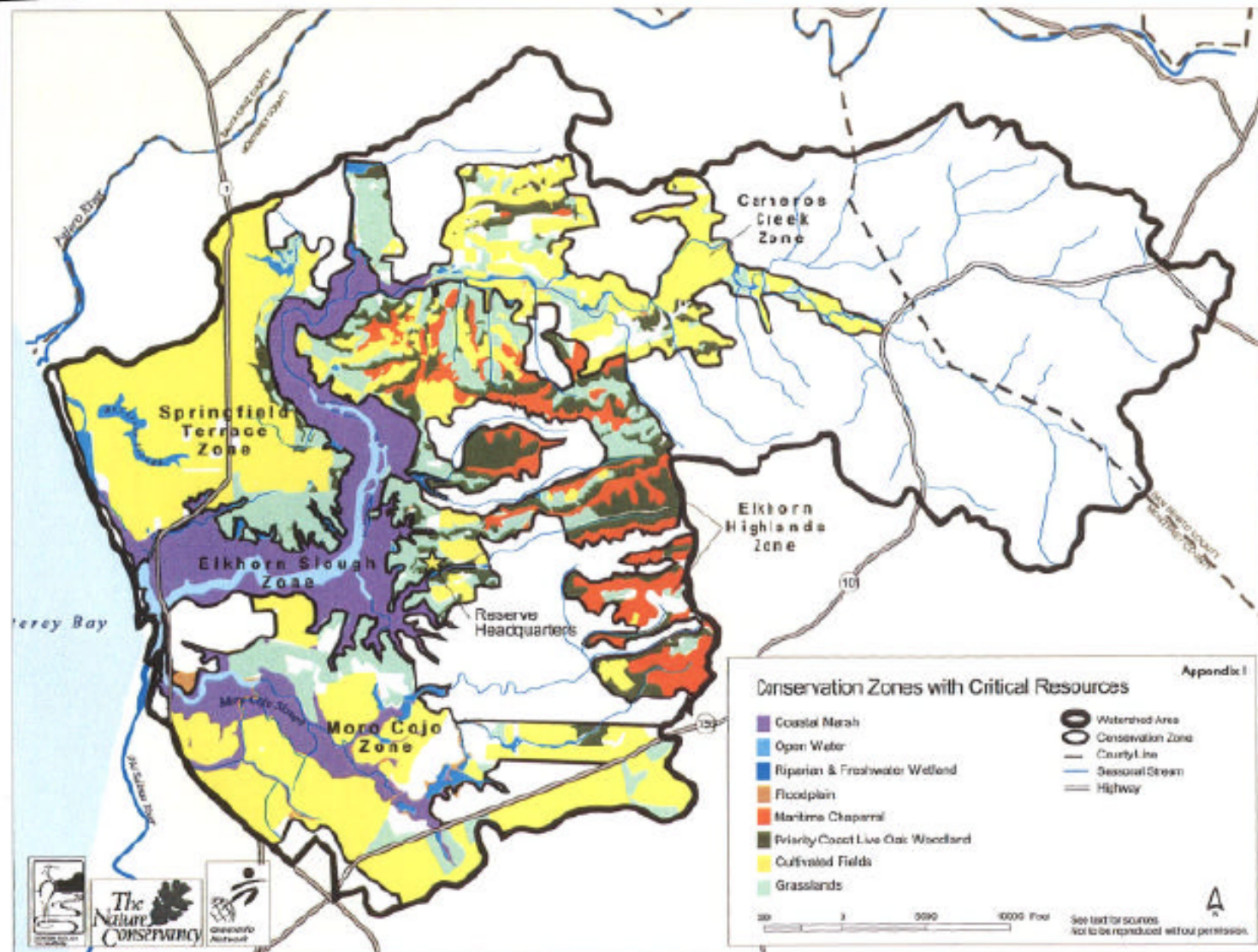
Northern Salinas Valley Watershed Restoration Plan



Northern Salinas Valley Watershed Restoration Plan



Elkhorn Slough Conservation Plan



Elkhorn Slough Conservation Plan

Moro Cojo Slough Zone

Conservation goals include:

- Protect marshes and adjacent freshwater wetlands and ponds
- Restore lands suitable for natural habitat
- Protect productive agricultural lands surrounding marshes

Strategies include:

- Acquire key lands to protect and restore marsh habitat;
- swaps to secure further protection of natural habitat lands
- Acquire fee or easements on viable farmlands, especially those surrounding wetlands through fee or conservation easement purchase
- Provide adequate wetland buffers
- Restore natural habitat where suitable

Elkhorn Slough Conservation Plan

Moro Cojo Actions

- Acquire wetland portions and buffers on three parcels in Moro Cojo Slough
- Restore marsh habitat in Moro Cojo Slough
- Develop and Implement Invasive Weed Eradication Plan

Reclamation Ditch Watershed Assessment and Management Strategy

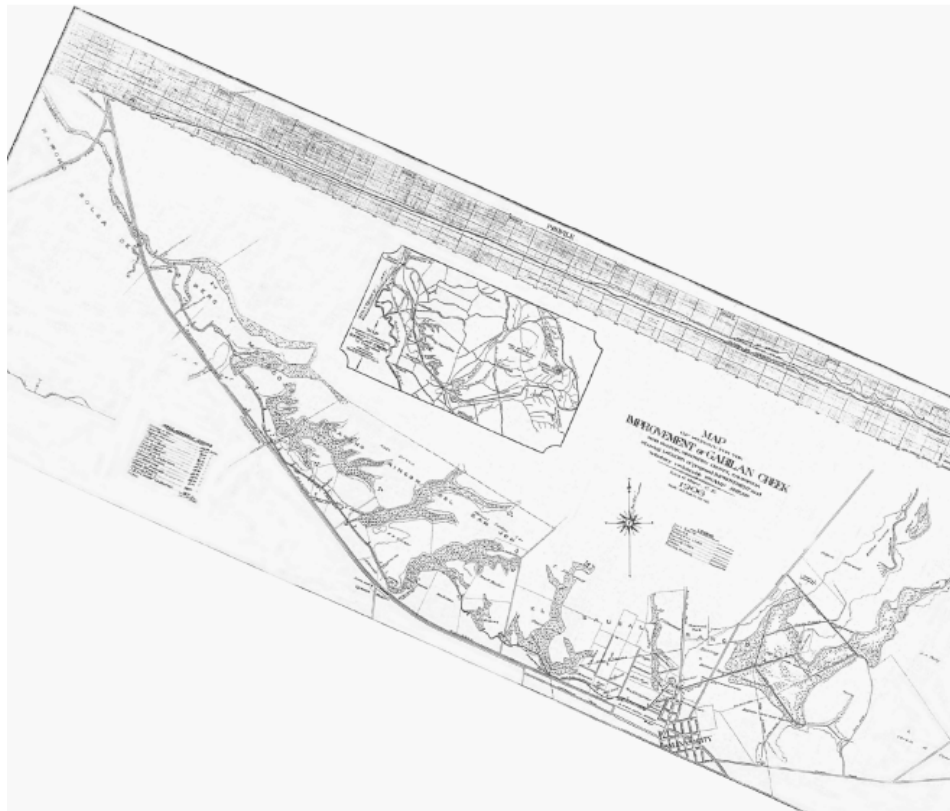
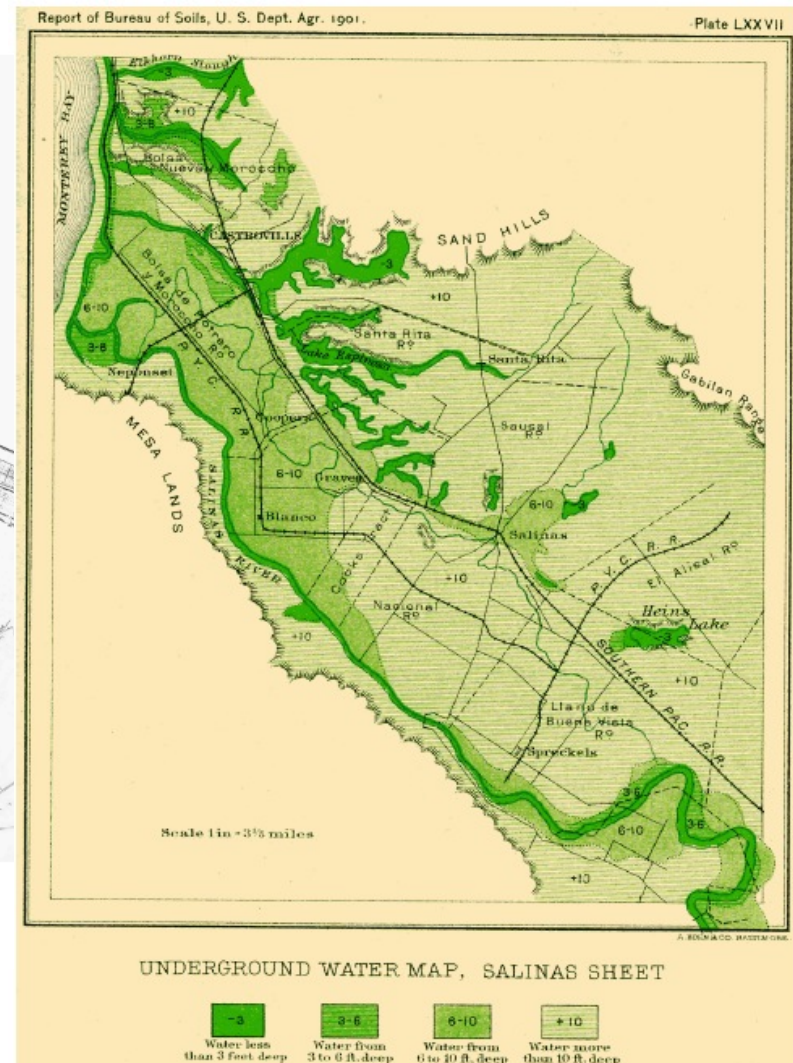
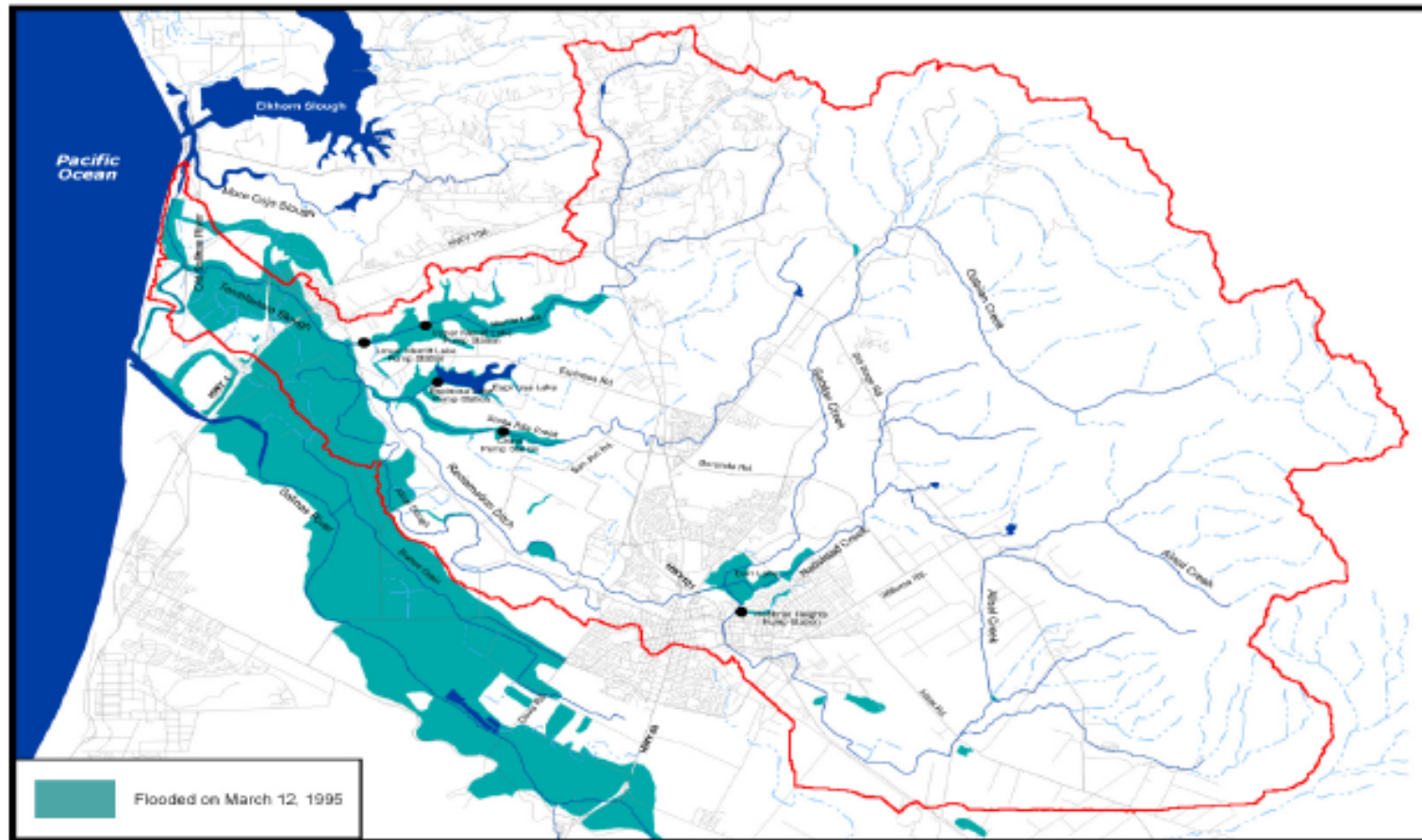


Figure 2.10 A map of the proposed improvement of (Lower) Reclamation Ditch Watershed (1906) by Lou Hare, Civil Engineer. This map better illustrates the size and distribution of the original swamplands (lakes) in and around the City of Salinas. Gabilan and Natividad Creeks are shown entering into Carr Lake on the far right.



Reclamation Ditch Watershed Assessment and Management Strategy



0 2.5 5 kilometers
0 2.5 5 miles

This map is intended as an approximation of the areas flooded on March 12, 1995. Flooded areas were drawn using a combination of oblique and ortho photos, taken on March 12, 13, & 15 courtesy of Moss Landing Marine Labs (MLML).

Map produced: Joel Casagrande & Fred Watson
Streams: USGS NHD dataset
Roads: Monterey County
(c) CCoWS, 2004

CCoWS

Central
Coast
Watershed
Studies

Reclamation Ditch Watershed Assessment and Management Strategy

Ten Management Goals were tentatively identified for the Watershed:

- Improve Water Quality
- Reduce Flooding of Developed Land
- Create Parklands & Natural Areas
- Determine Fish Passage and Steelhead Status
- Protect Rare & Special Status Species
- Reduce Mosquitoes
- Facilitate Food Safety and Agricultural Pest Control
- Reduce Harbor Sedimentation
- Achieve Sustainable Water Supply
- Maintain Economic Viability

Total		22	31	0
F) Increase Habitat for all Riparian Species	Increase Habitat for all Riparian Species (unspecified sub-goal)	12		
	<i>Specific Sub-Goals— None reported</i>			
	<i>Actions</i>			
	Identify areas for habitat restoration that is integrated with stewardship goals and opportunities: Direct this toward appropriate funding sources.		4	2
	Tax incentives to encourage landowners to set aside land for Native Habitat		1	
Total		12	5	2
G) Flood Control / Prevention	Flood Control/Prevention (unspecified sub-goal)	8	2	
	<i>Specific Sub-Goals</i>			
	Improve channel capacity	2		
	<i>Actions</i>			
	Prioritization of land acquisition for flood protection		1	3
	Reduce harbor sedimentation	4	1	
	Co-management of Salinas River and Rec. Ditch			
	Reduce channel sedimentation	3	1	
	Streamlined regulatory process for flood control (i.e. let people clean their ditches)		1	
	Locate sediment traps strategically to reduce clean up costs		3	
	Increase channel capacity of drainage ways. Widen channels and slow flows where feasible		3	
	Expand benefit assessment zone to whole watershed			
Total		17	12	3

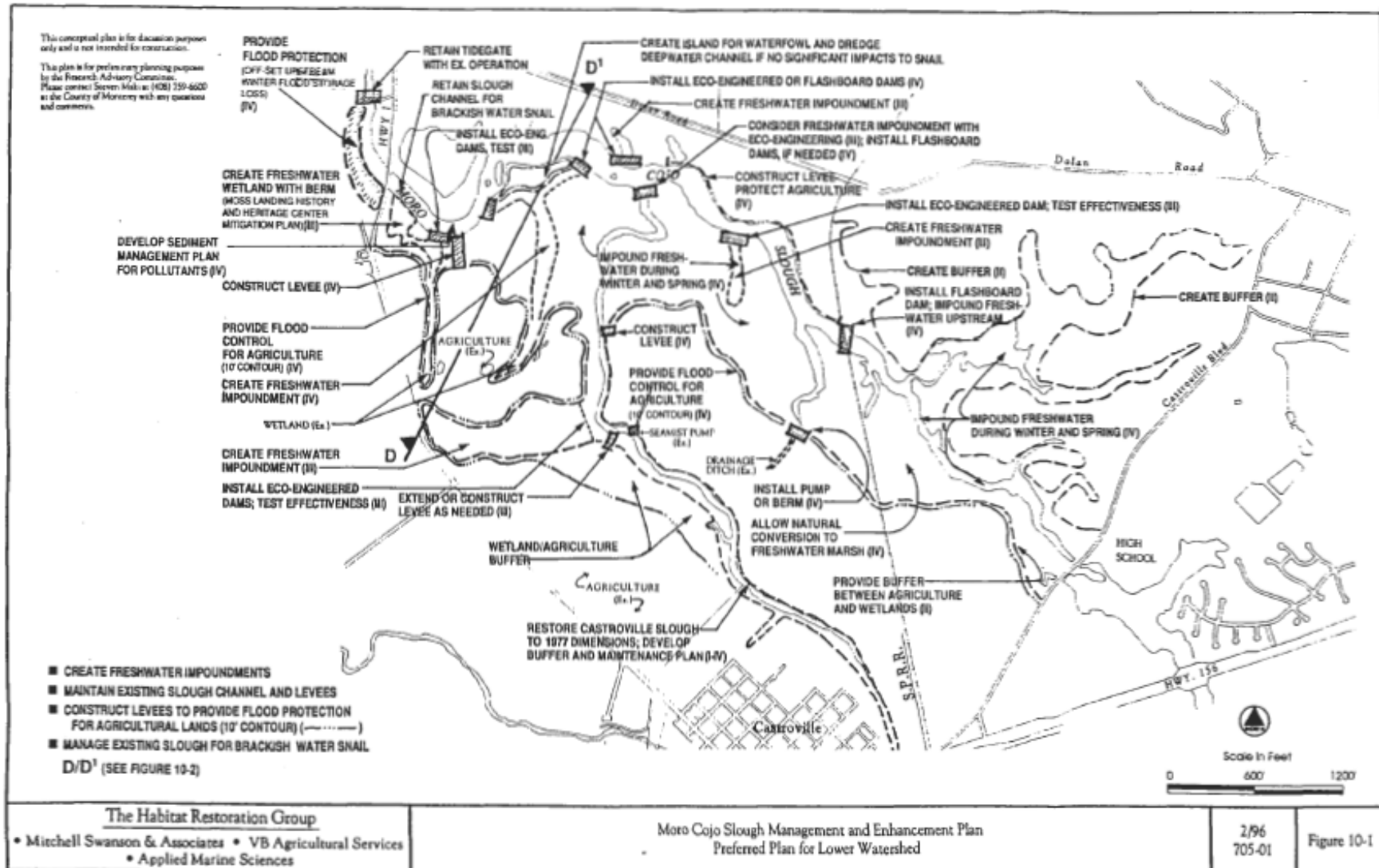
To be integrated into IRWMP planning process

Moro Cojo Slough Management and Enhancement Plan

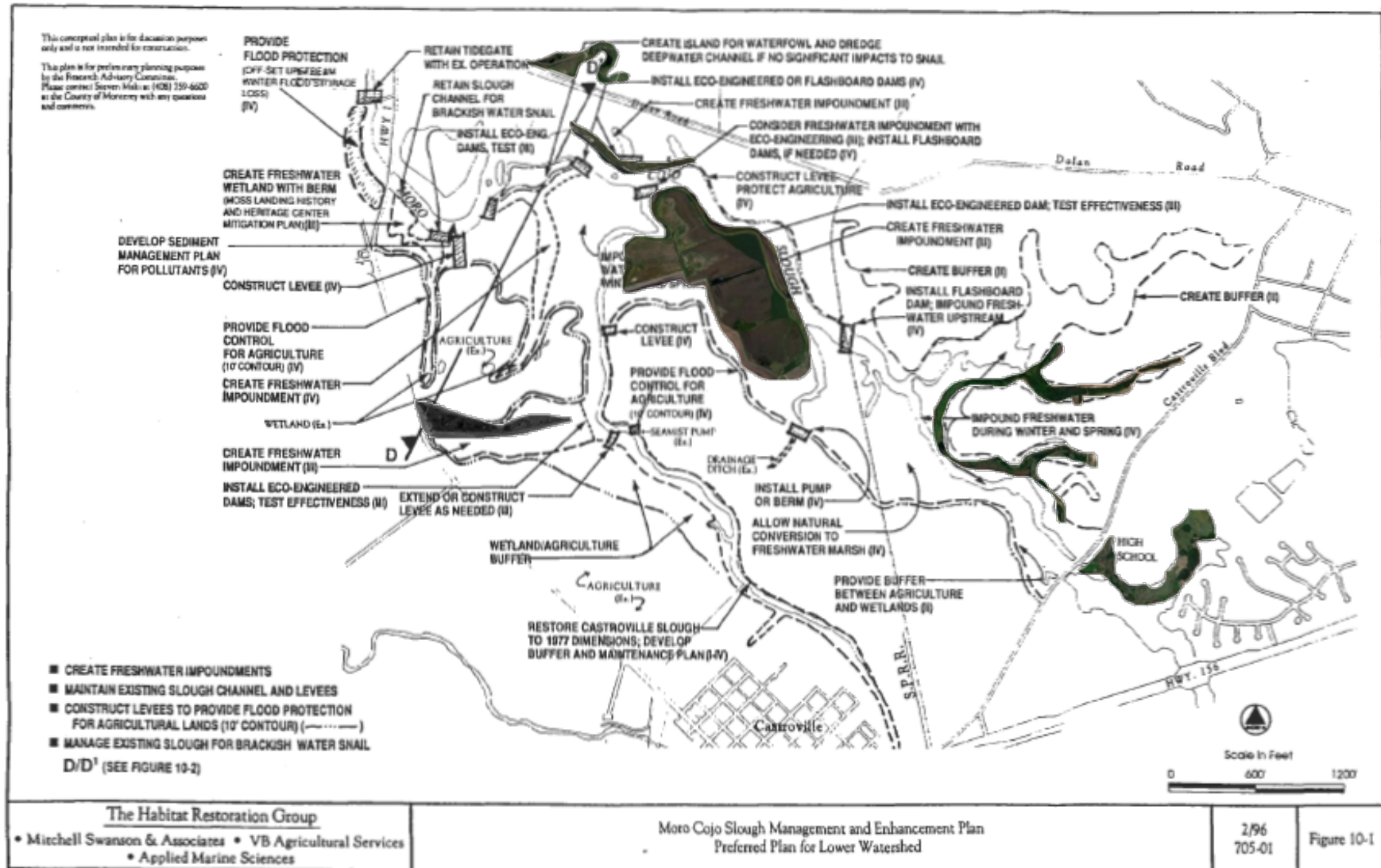
Goals:

- Preserve, enhance and restore natural resource values of the wetlands and upland of the slough.
- Reduce impacts of human impacts (water quality, sediment) on slough resources
- Utilize resources of partner organizations
- Increase freshwater to benefit wetland habitat
- Enhance habitat for threatened and endangered species
- Provide passive recreation opportunities
- Develop BMPs for slough and adjacent areas
- Provide resource interpretation for visitors

Moro Cojo Slough Management and Enhancement Plan



Moro Cojo Slough Management and Enhancement Plan



Where are we and what Next?

