

# TUNITAS CREEK



## Site Info

**Location:** 37.359027, -122.401126

**Estuary size:** 3 ha

**Watershed Area:** 30.1 sq. km

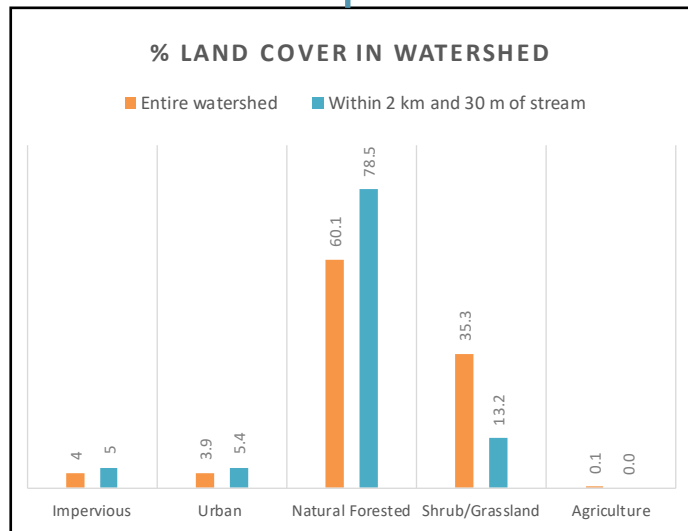
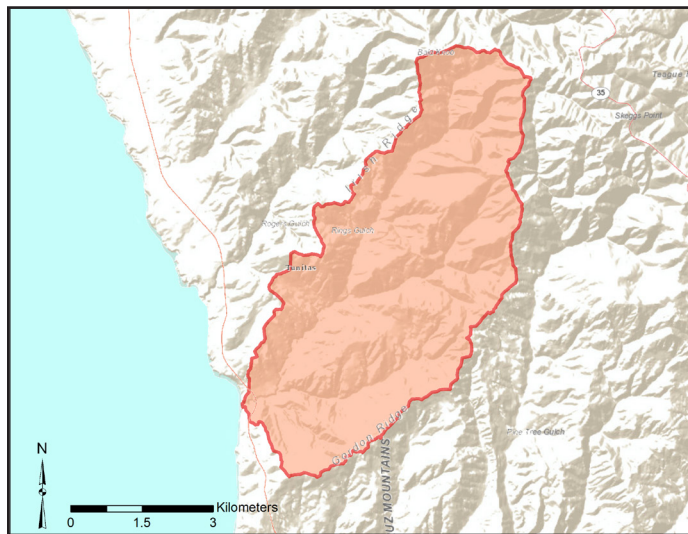
**Summary:** The site's CRAM score (74) fell into the *fair* condition category. Land cover within the watershed is dominated by forest and shrub/grassland. The system has lost most of its historic wettable lowlands which have been replaced by upland and vegetated woody habitat.

### Special Status Species

Brackish water snail	●
Coho salmon	●
Monarch butterfly	●
Red-legged frog	●
Saltmarsh common yellowthroat	●
San Francisco garter snake	●
Steelhead	●
Tidewater goby	●
Western pond turtle	●
Western snowy plover	●

● Present in estuary      ● Present in watershed  
 ● Potential for habitat      ● No known presence

## Watershed Information



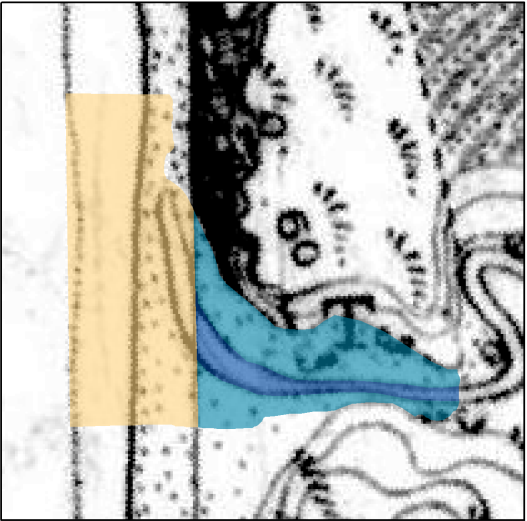
## CRAM Attribute and Index Scores

ATTRIBUTE	SITE SCORE	AVERAGE COUNTY SCORE
Buffer and Landscape	81	74
Hydrology	100	81
Physical Structure	50	46
Biotic Structure	67	65
<b>Index Score</b>	<b>74</b>	<b>67</b>

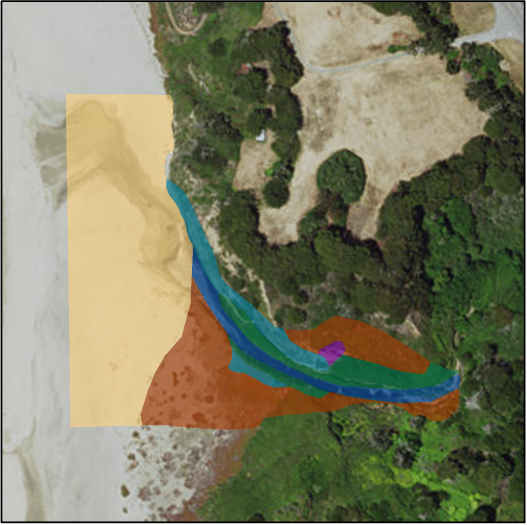
● Poor: 25-49      ● Fair: 50-74      ● Good: 75-100

# Habitat Change Analysis

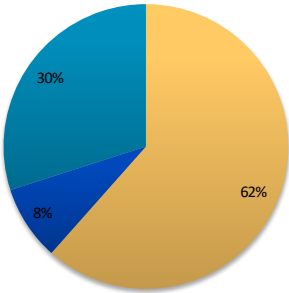
Historic Habitat Type



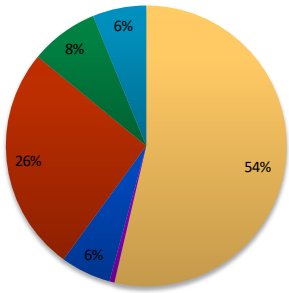
Current Habitat Type



■ Beach/Berm/Inlet 
 ■ Developed 
 ■ Open Water 
 ■ Upland 
 ■ Vegetated Woody 
 ■ Wettable Lowland



HABITAT TYPE	CHANGE IN %
Beach	-8
Open Water	-2
Developed	1
Upland	26
Vegetated Woody	8
Wettable Lowland	-24



## Site Photos

