

LOBITOS CREEK



Site Info

Location: 37.376291, -122.408785

Estuary size: 0.5 ha

Watershed Area: 10.5 sq. km

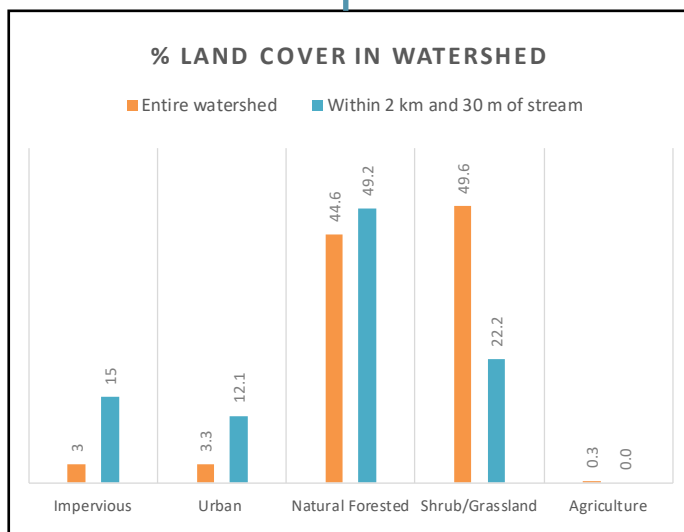
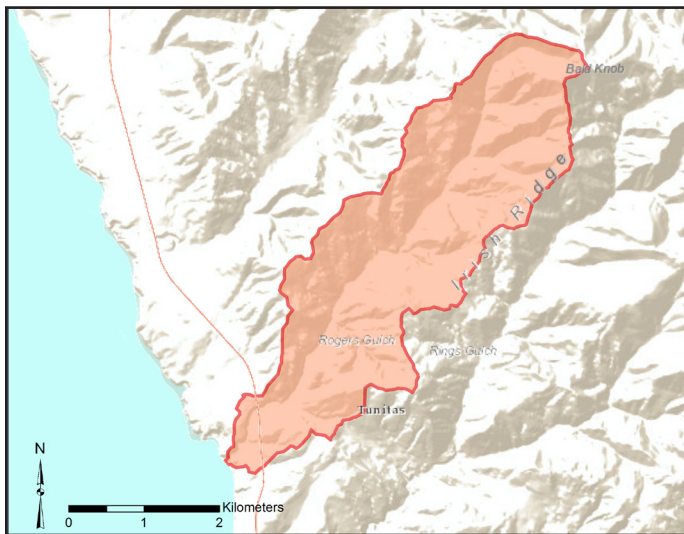
Summary: The site's CRAM score (67) fell into the *fair* condition category. Land cover within the watershed is dominated by shrub/grassland and forest. Some of the estuary's historic wettable lowland habitat has become open water and upland habitat.

Special Status Species

Brackish water snail	●
Coho salmon	●
Monarch butterfly	●
Red-legged frog	●
Saltmarsh common yellowthroat	●
San Francisco garter snake	●
Steelhead	●
Tidewater goby	●
Western pond turtle	●
Western snowy plover	●

● Present in estuary ● Present in watershed
● Potential for habitat ● No known presence

Watershed Information



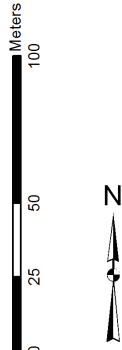
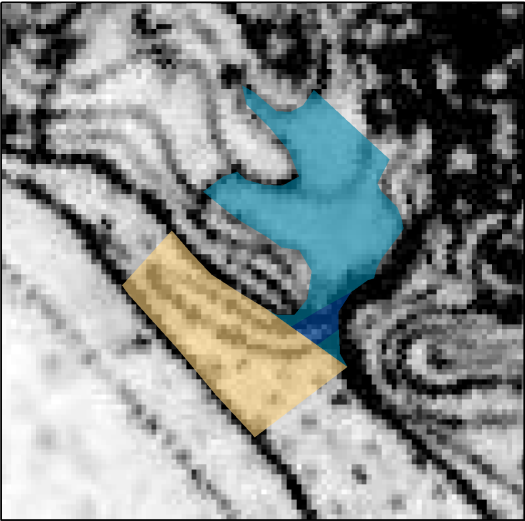
CRAM Attribute and Index Scores

ATTRIBUTE	SITE SCORE	AVERAGE COUNTY SCORE
Buffer and Landscape	72	74
Hydrology	92	81
Physical Structure	38	46
Biotic Structure	64	65
Index Score	67	67

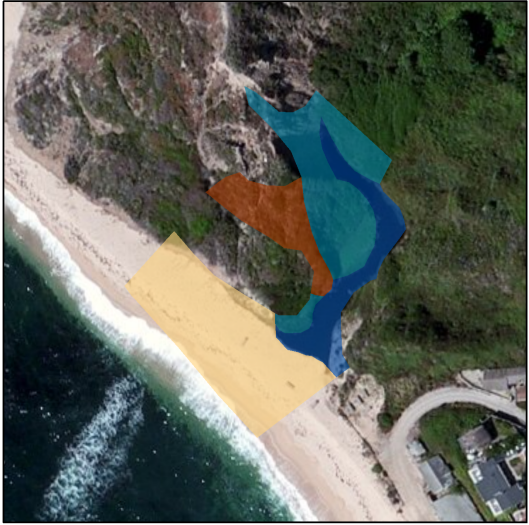
● Poor: 25-49 ● Fair: 50-74 ● Good: 75-100

Habitat Change Analysis

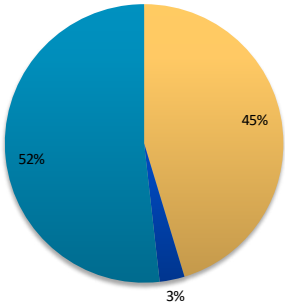
Historic Habitat Type



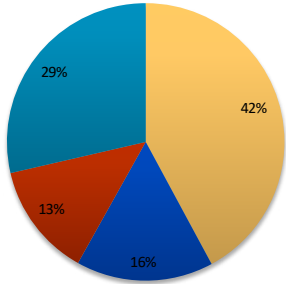
Current Habitat Type



■ Beach/Berm/Inlet
 ■ Developed
 ■ Open Water
 ■ Upland
 ■ Vegetated Woody
 ■ Wetable Lowland



HABITAT TYPE	CHANGE IN %
Beach	-3
Open Water	13
Developed	N/A
Upland	13
Vegetated Woody	N/A
Wetable Lowland	-23



Site Photos



Looking upstream



Looking downstream to the beach