

CANADA DEL REFUGIO CREEK



ESTUARY FACT SHEET

State Park Location: Refugio State Beach

Coordinates: 34.463073, -120.069754

Estuary Size: 2 ha

Estuary Area within State Park: 68.1%

Watershed Area: 20.8 sq. km

Watershed in Conservation: 33.8%

Canada del Refugio estuary



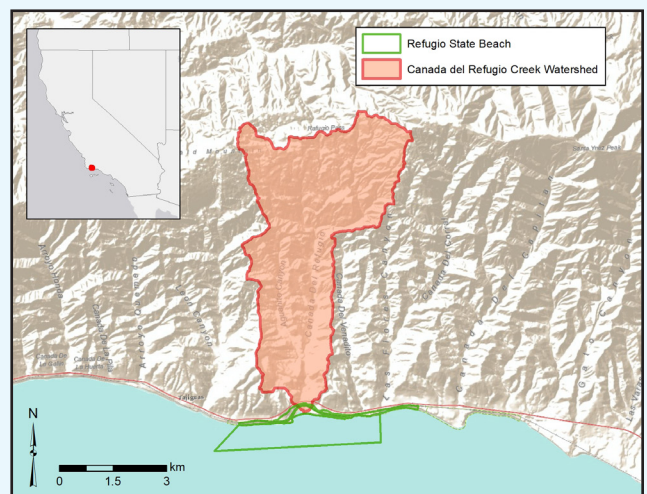
CRAM Attribute and Index Scores

ATTRIBUTE	SITE SCORE	AVERAGE REGION SCORE
Buffer and Landscape	40	66
Hydrology	58	68
Physical Structure	50	54
Biotic Structure	67	68
Index Score	54	64

● Poor: 25-49 ● Fair: 50-74 ● Good: 75-100

CRAM index scores for the estuary compared to the South Coast Region average. The site's CRAM score (54) fell into the fair condition category.

Watershed Information



Watershed and state park location and boundary map.

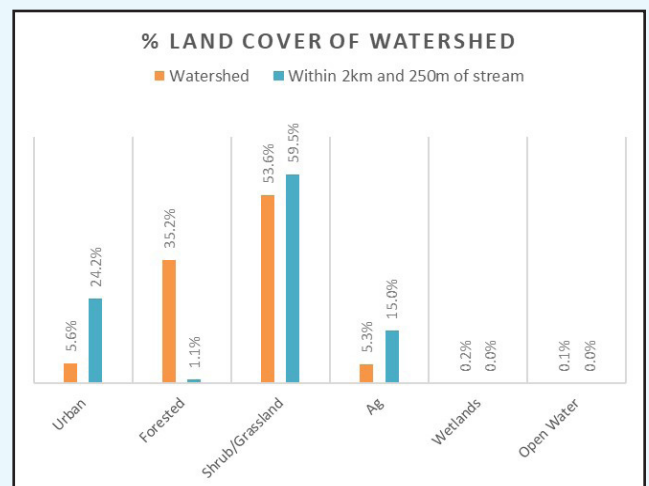
Special Status Species

Brackish water snail	●
Coho salmon	●
Monarch butterfly	●
Red-legged frog	●
Saltmarsh common yellowthroat	●
Steelhead	●
Tidewater goby	●
Western pond turtle	●
Western snowy plover	●

● Present in estuary ● Present in watershed

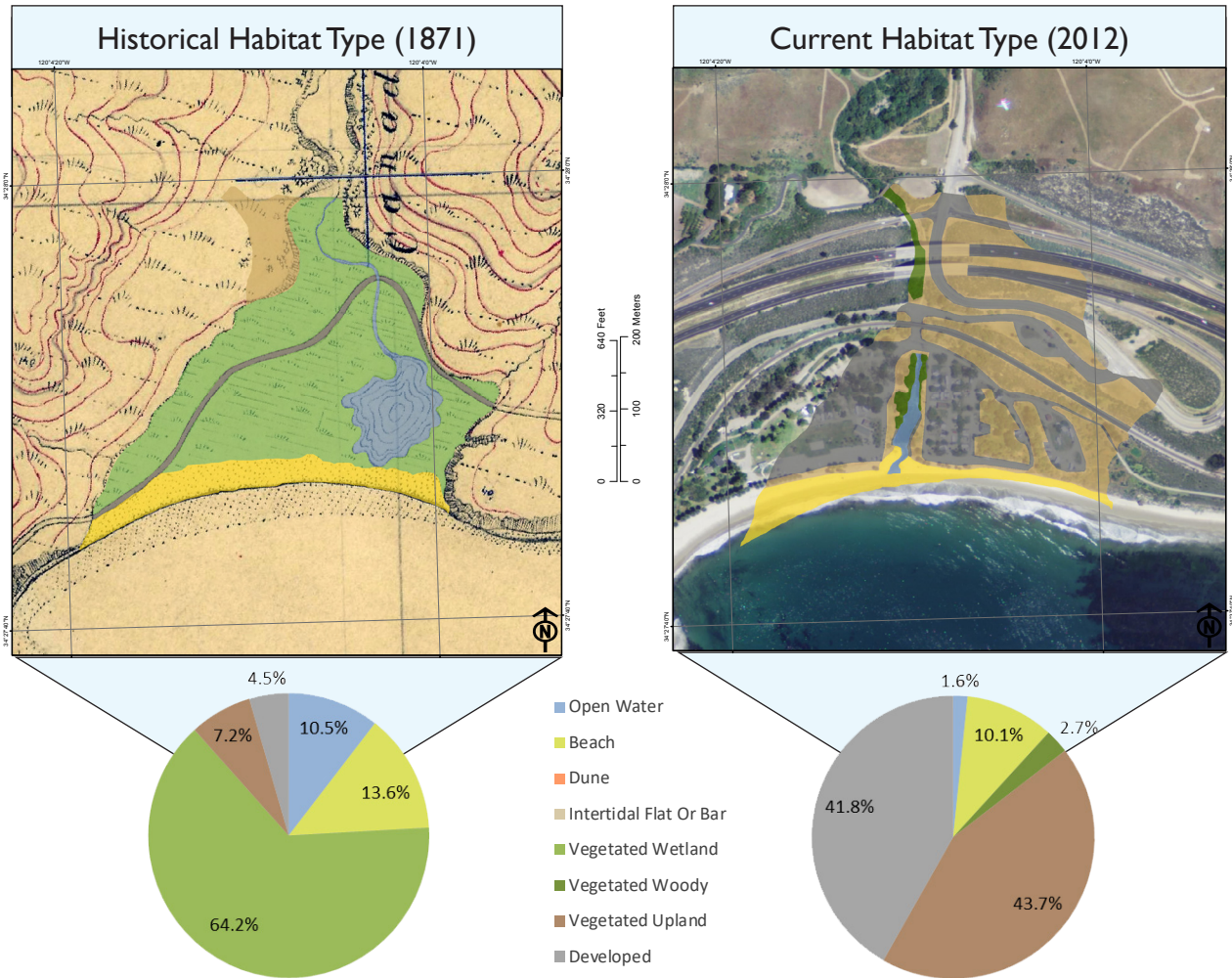
● No known presence

Known presence of select special status species at site (CNDDDB 2017).



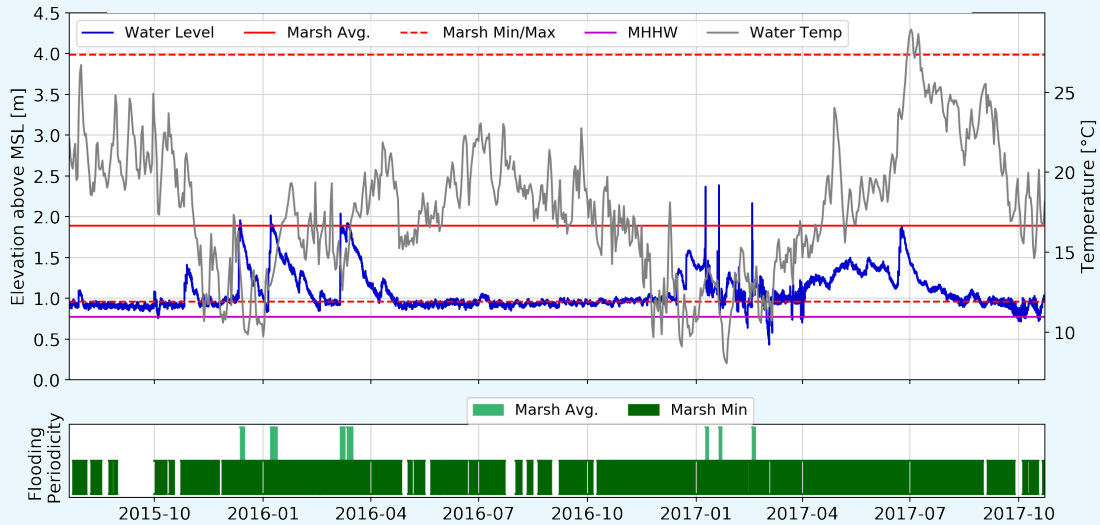
Graph shows % land cover within entire watershed compared to within a buffer of 2km upstream of outlet and 250 meters from stream. Land cover within the watershed is dominated by shrub/grassland.

Habitat Change Analysis



Habitat type maps and charts for 1871 and 2012. Habitat maps use USGS T-Sheets for the historical map and National Agriculture Imagery Program (NAIP) imagery (2012) for the current map. All of the estuary’s historical vegetated wetland habitat has become vegetated upland habitat or has been developed. Some of the historical open water habitat has been lost.

Estuary Water Elevation and Temperature



Graph shows fluctuations in water elevation and temperature, as well as flooding periodicity of marsh plain from October 2015–October 2017. Water temperatures are daily mean values.