

# ARROYO DE EN MEDIO



## Site Info

**Location:** 37.493356, -122.459853

**Estuary size:** 0.41 ha

**Watershed Area:** 2.85 sq. km

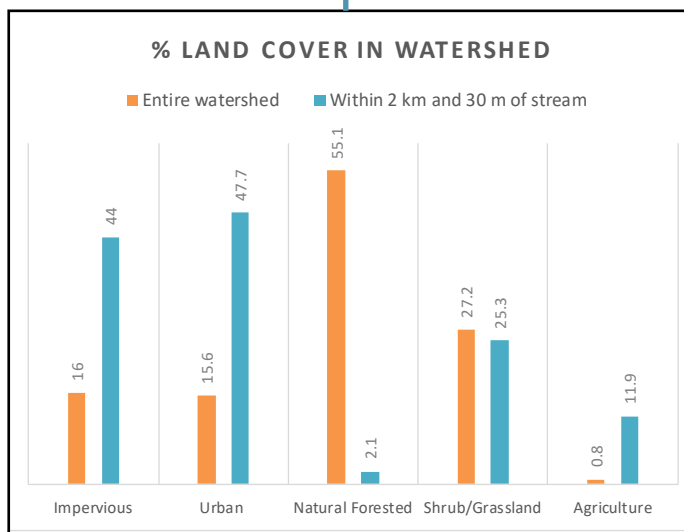
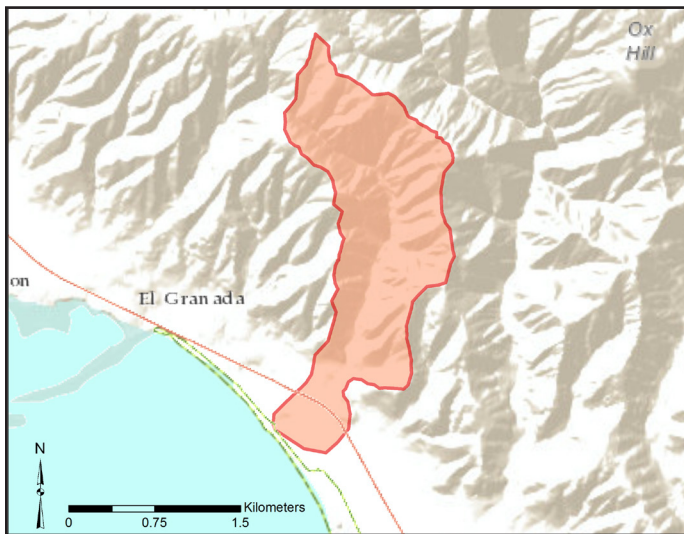
**Summary:** The site's CRAM score (46) fell into the *poor* condition category. Land cover within the watershed is dominated by forest with some developed and ag areas closer to the creek. Majority of the estuary's historic open water and upland habitat has become beach habitat.

### Special Status Species

Brackish water snail	●
Coho salmon	●
Monarch butterfly	●
Red-legged frog	●
Saltmarsh common yellowthroat	●
San Francisco garter snake	●
Steelhead	●
Tidewater goby	●
Western pond turtle	●
Western snowy plover	●

● Present in estuary      ● Present in watershed  
 ● Potential for habitat      ● No known presence

## Watershed Information



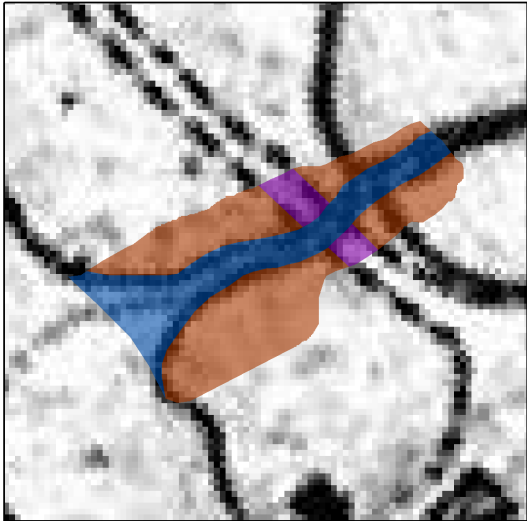
## CRAM Attribute and Index Scores

ATTRIBUTE	SITE SCORE	AVERAGE COUNTY SCORE
Buffer and Landscape	40	74
Hydrology	58	81
Physical Structure	38	46
Biotic Structure	47	65
<b>Index Score</b>	<b>46</b>	<b>67</b>

● Poor: 25-49      ● Fair: 50-74      ● Good: 75-100

# Habitat Change Analysis

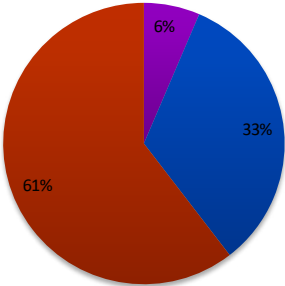
## Historic Habitat Type



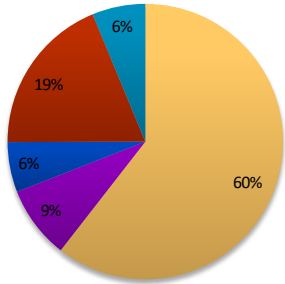
## Current Habitat Type



■ Beach/Berm/Inlet  
 ■ Developed  
 ■ Open Water  
 ■ Upland  
 ■ Vegetated Woody  
 ■ Wettable Lowland



HABITAT TYPE	CHANGE IN %
Beach	60
Open Water	-27
Developed	3
Upland	-42
Vegetated Woody	N/A
Wetable Lowland	6



## Site Photos



*Marsh plain of estuary*



*Looking from the estuary to the ocean*